

NO.	Oldham County	FG-FGA	FT-FTA	REB	P	TP	A
24	Anne Estes	2-3	4-4	2	1	8	0
23	Viv Bohon	2-4	0-0	1	2	4	2
11	Nathy Stiles	2-5	1-3	5	2	5	2
34	Rita Berry	3-6	1-3	3	1	7	4
14	Leri Oldham	0-0	2-2	0	0	0	0
22	Missy Shumway	0-0	0-0	0	0	0	0
4	Stella Wagner	0-0	0-0	0	0	0	0
25	Amy Wesley	-	-				
14	Mini Olive	-	-				
13	Julie Prather	-	-				
21	Denise Carroll	-	-				
31	Debbie Cantrell	-	-				
		-	-				
		-	-	2 D.B.			
TOTALS		9-18	8-12	13	6	26	8

PERCENTS

50.0 66.7 1

TEAM REBOUNDS (NOT IN TOTAL)

OLDHAM CO.

11-15=26

KNOTT CO. CENT.

13-9=22

SCORE BY HALVES

OFFICIALS CATHY STUWALL + YOSI MEADORS

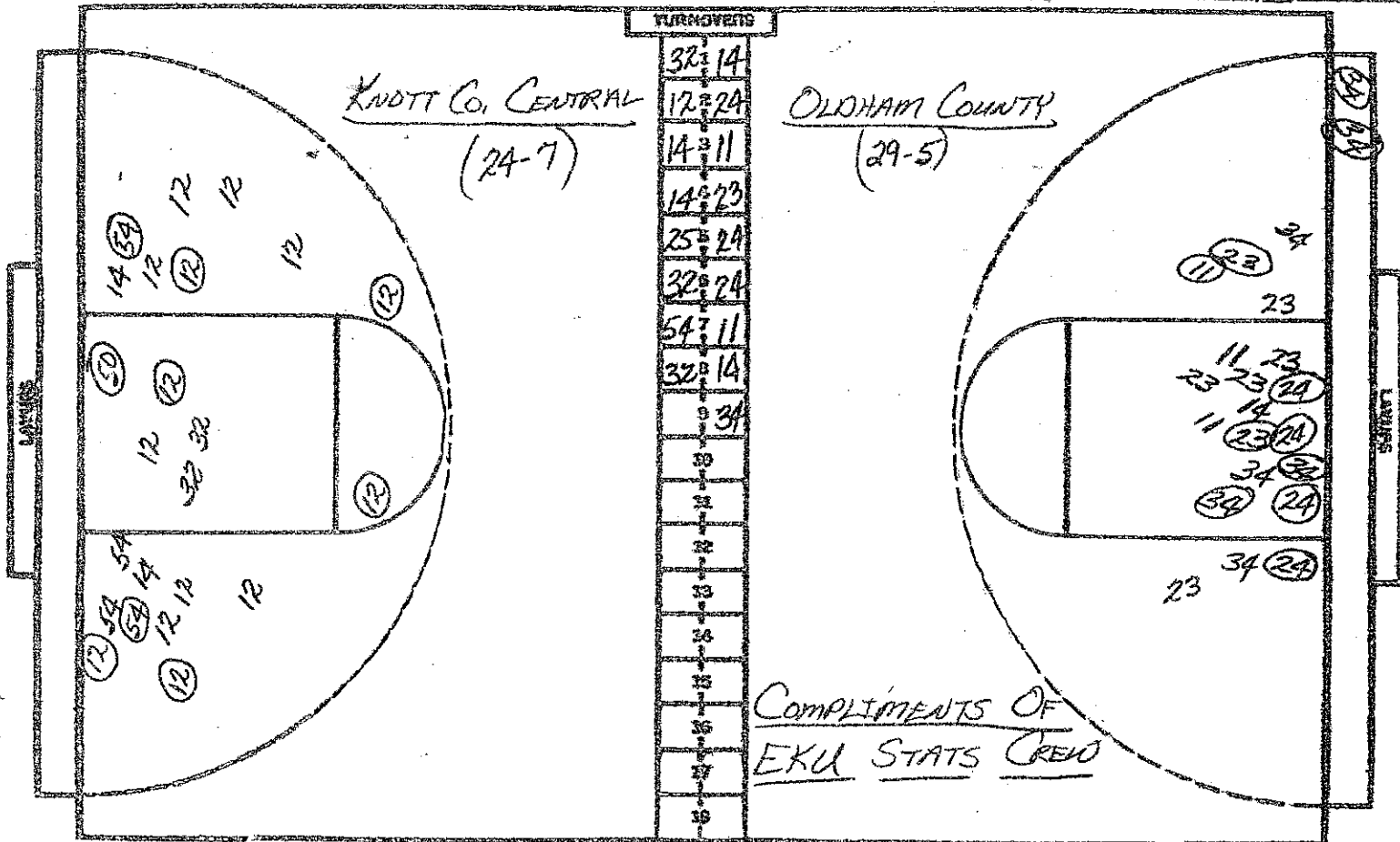
ATTENDANCE: For 4,200

NO.	Knott County	FG-FGA	FT-FTA	REB	P	TP	A
54	Melodee Meade	1-1	2-4	1	2	4	1
14	Carolyn Jacobs	1-1	0-0	1	2	2	1
50	Donna Combs	0-1	0-0	1	0	0	0
12	Sharon Combs	3-8	2-4	3	1	8	2
32	Delena Higgins	4-6	0-0	2	1	8	0
42	Sandy Hall	0-0	0-0	0	1	0	0
25	Janice Higgins	0-0	0-0	1	3	0	0
10	Charlene W'ker	-	-				
14	Tammy Dobson	-	-				
34	Candy Smith	-	-				
24	Donna Martin	-	-				
20	Durhanda Watts	-	-				
		-	-				
		-	-	2 D.B.			
TOTALS		9-17	4-8	11	10	22	4

PERCENTS

52.9 50.0 0

TEAM REBOUNDS (NOT IN TOTAL)



NO.	Knott County	FG-FGA	FT-FTA	REB	P	TP	A
34	Melodee Heade	3-6	4-7	4	4	10	2
14	Carolyn Jacobs	1-3	0-0	2	5	2	2
30	Donna Combs	1-2	0-0	5	2	2	0
12	Sharon Jombs	9-21	8-10	8	4	26	2
32	Delena Higgins	4-8	1-2	4	2	9	0
42	Sandy Hall	0-0	0-0	0	1	0	0
25	Janice Higgins	0-0	0-0	1	5	0	0
10	Charlene W'ker	-	DNP				
44	Tammy Dobson	-	DNP				
31	Candy Smith	-	DNP				
21	Donna Martin	-	DNP				
20	Durhanda Watts	-	DNP				
		-	-				
		-	-	3 D.P.			
TOTALS		18-40	13-19	27	23	49	6

PERCENTS

45.0 68.4 0

TEAM REBOUNDS (NOT IN TOTAL)

NO.	Oldham County	FG-FGA	FT-FTA	REB	P	TP	A
24	Anne Estes	6-8	7-8	10	2	19	0
23	Viv Bohon	4-11	1-4	7	3	9	3
11	Nathy Stites	3-8	1-3	6	3	7	2
34	Rita Berry	7-13	4-12	6	2	18	7
14	Lori Oldham	0-1	2-4	2	3	2	1
22	Missy Shumway	0-0	0-0	0	0	0	0
4	Stella Wagner	0-0	0-0	0	0	0	0
25	Amy Wesley	-	DNP				
44	Mimi Olive	-	DNP				
13	Julie Prather	-	DNP				
21	Denise Carroll	-	DNP				
31	Debbie Cantrell	-	DNP				
		-	-				
		-	-	5 D.P.			
TOTALS		20-41	15-31	36	13	55	13

PERCENTS

48.8 48.4 2

TEAM REBOUNDS (NOT IN TOTAL)

SCORE BY HALVES

Oldham Co. 11-15-13-16=55

Knott Co. Cent. 13-9-17-10=49

OFFICIALS: CATHY STONALL + YOGI MEADORS

ATTENDANCE: EST. 4,300 5TH SESSION